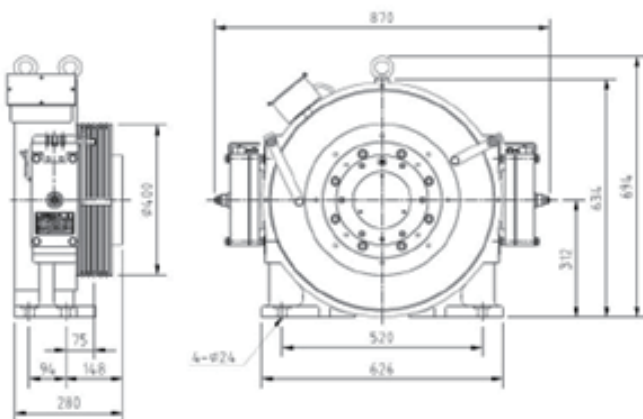
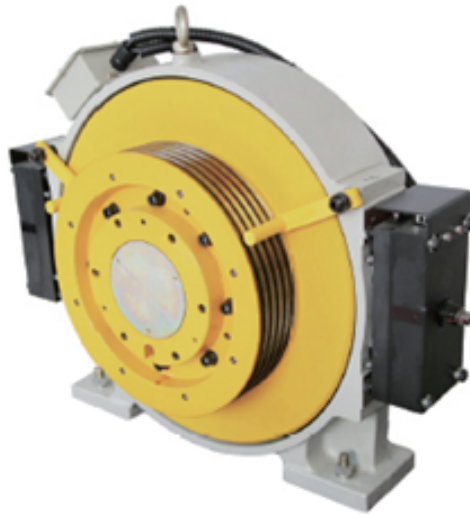


GEXCO TK035 Traction Machine

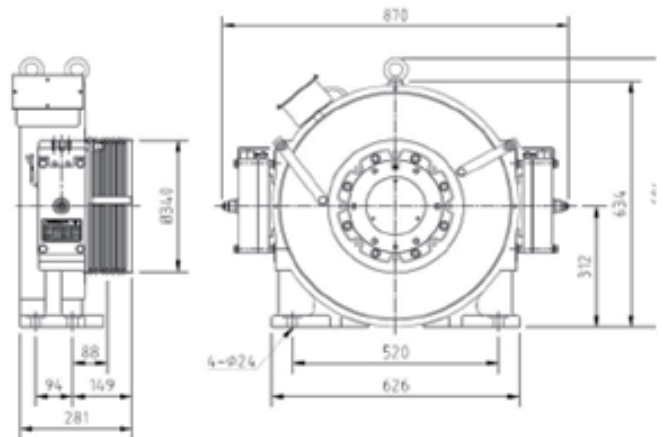
A gearless, medium-low speed traction machine based on the original technology of a synchronous motor that uses high-density windings in the stator and permanent magnets in the rotor. It has quiet and smooth operation, precise position and speed control, excellent durability, low-cost maintenance, and is environmentally friendly and energy efficient. The motor is analyzed and designed using a Motor Simulation Program and manufactured.

TK035

- Usage : MR, MRL
- Rated Load : ~ 1,200kg (2:1)
- Elevator Speed : ~2.0m/s
- Shaft Load : 3,500kg
- Brake : REB31 DC110V / 70V
- Weight : 360kg



▲ ~ 1,000kg, 2.0m/s (2:1)



▲ ~ 1,200kg, 2.0m/s (2:1)